



DEva Integrated Lighting System

## Wholesale Ordering Guide

24 July, 2017



The DEva combines a unique low-frequency square wave ballast with a computer-designed DE reflector for one amazing, computer-controlled grow light system. We hope you dig it the most.

This guide will run through the options in ordering and shipping them.

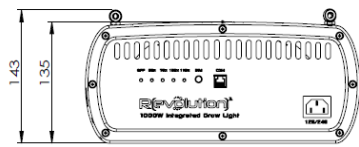
**The Box Contains**

- DEva Integrated Lighting System
- Power Cord
- Two (2) RJ-14 Data Cables
- RJ-14 Dual Splitter

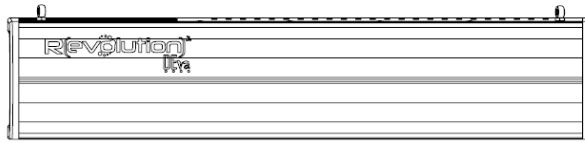
**The Box Does NOT Contain**

- RLC1 Lighting Controller which is sold separately

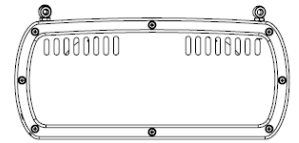
**Dimensions**



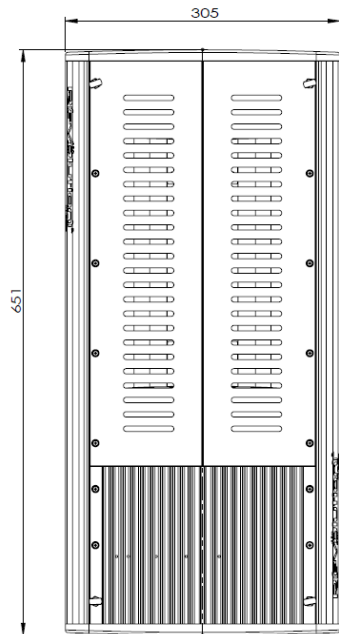
Front view



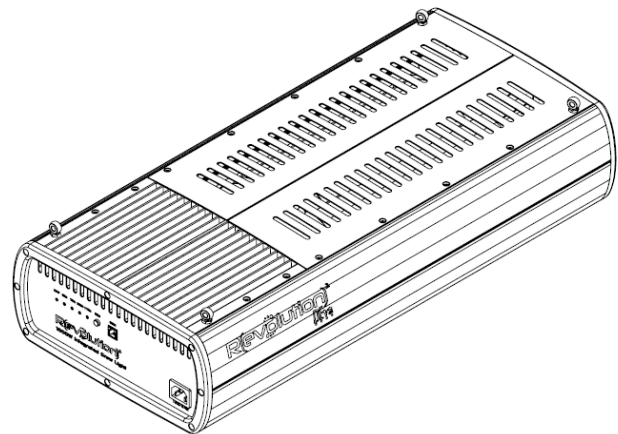
Side view



Back view



Top view



DIMENSIONS ARE IN MILLIMETERS UNLESS OTHERWISE SPECIFIED		FINISH:	CREEDS AND BREAK SHARP EDGES	DO NOT SCALE DRAWING	A3
SURFACE FINISH: TOLERANCES: UNLESS ANGULAR		Revolution Microelectronics Co.,Ltd.			TITLE:
DESIGN	NAME	SIGNATURE	DATE	DEVA1000W outside dimensions	
CHKD					
APPVD					
MFG					
QA		MATERIAL:	DWG NO.	REVISION	A

**HST (Import Tariff) Codes**

Item	HST Code
DEva Integrated Lighting System	9405.40.99
RLC1 Lighting Controller	8537.10.99

# Shipping Box Sizes

### DEva – 1 per Box

Flat pattern Scale 1 : 8  
Outside dimension : 36.5 x 70.5 x 20.0 CM<sup>3</sup>

### RLC1 Lighting Controller – 12 to a Carton

Flatten view

Measurement (Outside) : 340 x 472 x 190 mm.<sup>3</sup>  
Isometric View

**Revolution<sup>2</sup>**  
RLC1  
Digital Lighting Controller

THIS SIDE UP    FRAGILE    KEEP DRY

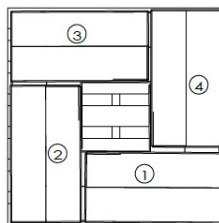
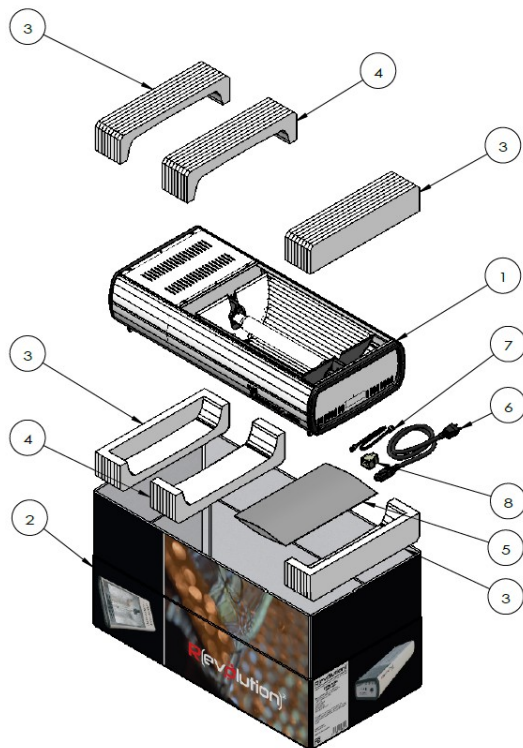
12PCS per 1 CTN  
1layer on pallet / 6 CTN

REV.	DESCRIPTION	DATE	APPROVED
A	INITIAL	04/05/2016	

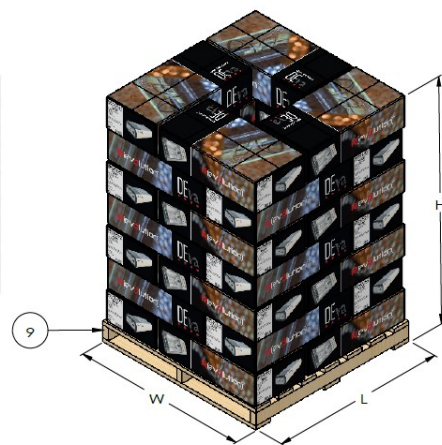
REVISIONS

Master Carton for RLC1

# Pallet Packing



4 CTN / layer



4 x 7 = 28 Pcs by Air ( W110 Cm. x L110 Cm. x H155 Cm. Weight =253 Kg)  
4 x 9 = 36 Pcs by Sea ( W110 Cm. x L110 Cm. x H195 Cm. Weight = 321 Kg)

Box size : 36 Cm x 70 Cm x 20 Cm  
Whight : 8.5 Kg

ITEM NO.	PART NUMBER	DESCRIPTION	QTY.
1	R-DW-AS-026	Ass'y Drawing for DEva 1000W	1
2	R-DW-PK-039	Paper Box 4 color Ballast DEva	1
3	R-DW-PK-040-1	EPE foam front/backBallast DEva	4
4	R-DW-PK-040-2	EPE foam mid Ballast DEva	2
5	R-DW-PK-033	EPE Foam bag W160 x L290 x T 1.0mm White color	1
6	R-XH006A-MG	AC Power Cord 3x1.4AWG x 6 FT with Magnetic core	1
7	R-DW-HN-019-1	Telephone Cable RJ11 6P4C L= 3M. Black	1
8	R-RJ12-6P6C-Y	RJ12 6P6C Y Splitter	1
9	-	Wooden Pallet 110x110	1/28

CUSTOMER	THIRD ANGLE PROJECTION	DESIGN	DRAWN	CHK'D	APPV'D	DIMENSIONS ARE IN MILLIMETERS			
signature and date		signature and date	signature and date	signature and date	signature and date	DWG NO.	DWG Date	Packing Standard for DEva 1000W	
						R-DW-PK-046	06/05/2016	A	
						MATERIAL:	NOT TO SCALE		

## Power Cords

RLC1 Controller adapters come with ALL FOUR plug versions and are world-power ready. DEVA lights come in three voltages ranges - 120/240, 240/277 and 347/480 volts, and can be ordered with various power cords as noted below. 347 volt DEvas are direct-wire.

Part Number	Where Used	Looks Like ...
DEVA1000W-US120 (120/240 Input Voltage)	USA, Canada	
DEVA1000W-US240 (240/277 Input Voltage)	USA, Canada	
DEVA1000W-277 (240/277 Input Voltage)	USA, Canada, Europe NEMA 6-15P	
DEVA1000W-AUS (240/277 Input Voltage)	Australia, New Zealand, China, Argentina	
DEVA1000W-UK (240/277 Input Voltage)	UK, Ireland, Singapore	
DEVA1000W-EURO (240/277 Input Voltage)	Europe (except UK)	

## Brochures

Download and print color PDF brochures from the website here:

English	<a href="http://revolutionmicro.com/">http://revolutionmicro.com/</a>
German	<a href="http://revolutionmicro.de/">http://revolutionmicro.de/</a>
Russian	<a href="http://revolutionmicro.ru/">http://revolutionmicro.ru/</a>
Also English, but <i>proper</i> English	<a href="http://revolutionmicro.co.uk/">http://revolutionmicro.co.uk/</a>
Thai	<a href="http://revolutionmicro.co.th/">http://revolutionmicro.co.th</a>

## Technical Specifications

Input Voltage	120 / 240 / 277 volts AC, 50/60 Hz
Input Current	4.40 amperes @ 240 volts
System efficiency	94.7% @ 240 volts
Driver efficiency at full power	> 98%
Power factor	> 99.4%
Light Source	1000W 400v double-ended lamp
Luminous Flux	> 2100 uMole/sec
External Dim	Revolution or Autopilot controller
External Dim Connector	RJ14 telephone interconnect type (6P6C)
Internal Dim	Push button on panel
Output power	600 – 1150 dimmable in 1% steps
Dimming	Pushbutton or external controller
Certifications	Certified to FCC Part 18 Class B, FCC Part 15 Class B CSA Certified to UL 1598 CE Certified RoHS and RoHS2 Certified
Dimensions	305mm x 650mm x 135mm (about 26 x 12 x 5 inches)

## Terms and Conditions

Standard terms and conditions of purchase of Revolution products:

Payment Terms	50% upon order, balance due upon shipment
Shipping	FOB Port of Bangkok, Thailand
Warranty Period	Three years from date of shipment
Warranty Process	Credit applied to next order, electronics to be returned or proof of destruction provided as requested by Revolution.
Warranty Repair	Revolution has spare electronics packs for the DEva that can be exchanged in the field for faster customer service. Ask your rep for details.

## FCC Compliance Statement

The DEva Integrated Lighting System has been tested at FCC-certified laboratories in the United States and conforms to FCC's Part 18B Consumer standard for Industrial, Scientific, and Medical Equipment for both conducted and radiated emissions. Although not required by the FCC, the DEva has also been qualified in the same laboratory to pass FCC Part 15B, usually reserved for computers, pro audio, and similar consumer electronic devices.

**DEva**  
**120/240 1000W**  
FCC ID: 2AH86-DEVA1000W

Given that all electronic equipment emits some RF energy, please note that compliance with these standards does not mean a zero level of emission, only a very low level of emission. The FCC requires that for safety we also state:

*This product may cause interference to radio equipment and should not be installed near maritime safety communications equipment or other critical navigation or communication equipment operating between 0.45-30 MHz.*

*This device complies with Part 18 of the FCC Rules.*

*Changes or modifications not expressly approved by Revolution Microelectronics could void the user's authority to operate the equipment.*

This device complies with Part 15 of the FCC Rules.